



 **yapeksan®**

2017



İskele Kalıp Sistemleri

Scaffolding Formwork Systems

أنظمة قوالب السقالة

Системы строительных лесов для опалубки

Since 2000



Panomod®

ÇERÇEVE TİP ÇERHİ İSKELESİ SİSTEMİ

FRAME TYPE FACADE SCAFFOLDING SYSTEM

نظام سقالة جبهة نوع إطار

СИСТЕМА СТРОИТЕЛЬНЫХ ЛЕСОВ ДЛЯ ФАСАДА РАМНОГО ТИПА



Flamod®

FLANŞLI TİP İSKELE SİSTEMİ

Flanged Type Scaffolding System

نظام سقالة نوع ذات الحواف

СИСТЕМА СТРОИТЕЛЬНЫХ ЛЕСОВ ФЛАНЦЕВОГО ТИПА



Mobilmod®

ÇERÇEVE TİP MOBİL İSKELE SİSTEMİ

FRAME TYPE MOBILE SCAFFOLDING SYSTEM

نظام سقالة متحركة نوع إطار

МОБИЛЬНАЯ СИСТЕМА СТРОИТЕЛЬНЫХ ЛЕСОВ РАМНОГО ТИПА



Masamod®

ÇERÇEVE TİP KALIP İSKELESİ SİSTEMİ

FRAME TYPE SHORING SCAFFOLDING SYSTEM

نظام سقالة قالب نوع إطار

СИСТЕМА СТРОИТЕЛЬНЫХ ЛЕСОВ ДЛЯ ОПАЛУБКИ РАМНОГО ТИПА



Kulemod®

KOVANLI TİP KALIP İSKELESİ SİSTEMİ

TOWER TYPE SHORING SCAFFOLDING SYSTEM

نظام سقالة قالب ذات مساند

СИСТЕМА СТРОИТЕЛЬНЫХ ЛЕСОВ ДЛЯ ОПАЛУБКИ БАШЕННОГО ТИПА (ВЫШКИ-ТУРЫ)





Finmod®

FİNCANLI TİP KALIP İSKELESİ SİSTEMİ

CUP LOCK TYPE SHORING SCAFFOLDING SYSTEM

نظام سقالة قالب ذات شكل فنجان

СИСТЕМА СТРОИТЕЛЬНЫХ ЛЕСОВ ДЛЯ ОПАЛУБКИ ЧАШЕЧНОГО ТИПА



Telmod®

TELESKOPIK TİP KALIP İSKELESİ SİSTEMİ

TELESCOPIK PROP TYPE SHORING SCAFFOLDING SYSTEM

نظام سقالة قالب نوع تلسكوبيك

СИСТЕМА СТРОИТЕЛЬНЫХ ЛЕСОВ ДЛЯ ОПАЛУБКИ

ТЕЛЕСКОПИЧЕСКОГО ТИПА



Mermod®

ÇERÇEVE TİP MERDİVEN KULESİ İSKELE SİSTEMİ

FRAME TYPE STAIR TOWER SCAFFOLDING SYSTEM

نظام سقالة قالب ذات سلم نوع إطار

СИСТЕМА СТРОИТЕЛЬНЫХ ЛЕСОВ РАМНОГО ТИПА, ЛЕСТНИЦЫ-БАШНИ



Aksesuar

AKSESUARLAR

ACCESSORIES

الأكسسوارات

АКСЕССУАРЫ



ÇERÇEVE TİP CEPHE İSKELESİ SİSTEMİ

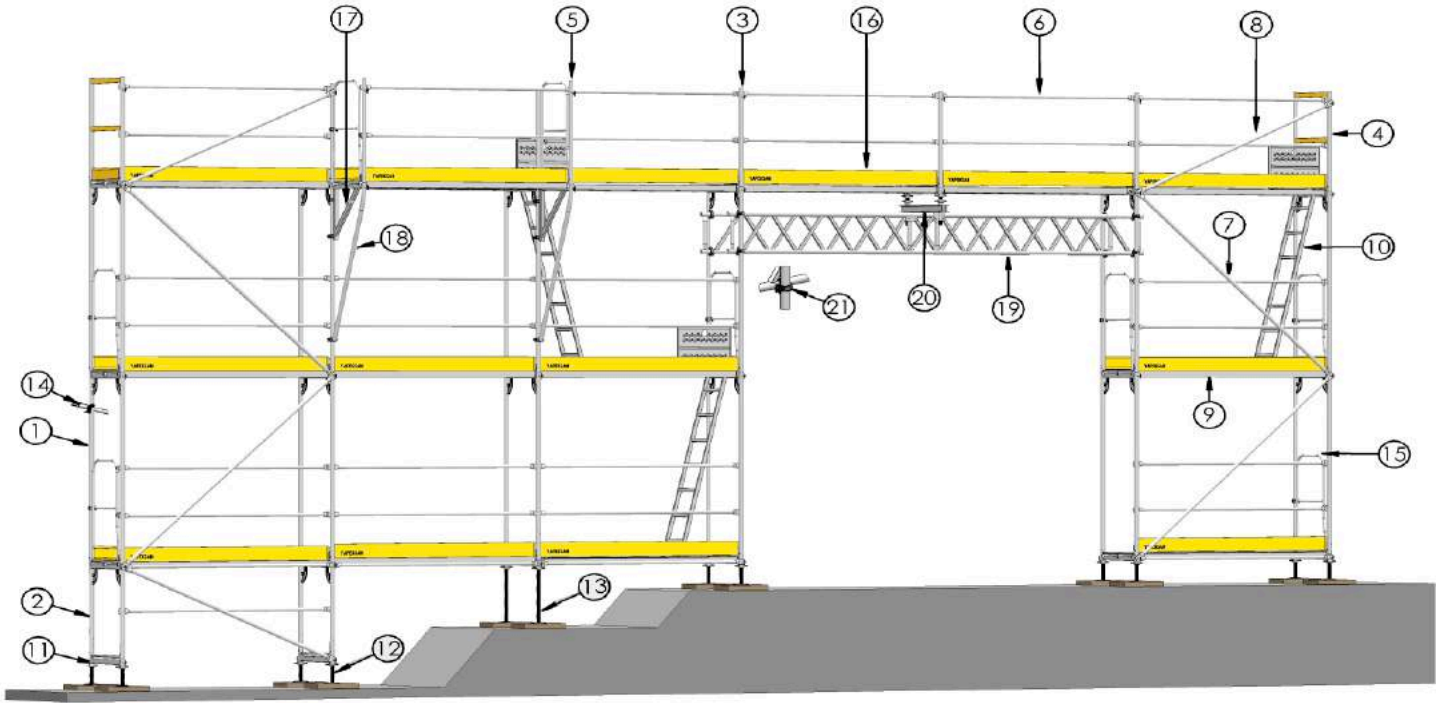
FRAME TYPE FACADE SCAFFOLDING SYSTEM

نظام سقالة جبهة نوع إطار

СИСТЕМА СТРОИТЕЛЬНЫХ ЛЕСОВ ДЛЯ ФАСАДА РАМНОГО ТИПА

Panomod®





SİSTEMİN ELEMANLARI

SYSTEM EQUIPMENTS

عناصر النظام

ЭЛЕМЕНТЫ СИСТЕМЫ



4

Çelik Bitiş Korkuluk 700*1100

Steel Finish Handrails 700*1100

حاجز أمان نهاية فولاذية

Стальное финишное ограждение



1

Çelik Çerçeve 700*2000

Steel Frame 700*2000

أطار فولاذي

Стальная рама



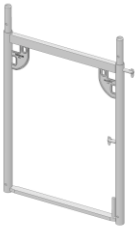
5

Çelik Korkuluk 1100

Steel Guardrail 1100

حاجز أمان فولاذي

Стальное ограждение



2

Çelik Çerçeve 700*1000

Steel Frame 700*1000

أطار فولاذي

Стальная рама



6

Çelik Yatay 2500

Steel Horizontal Brace 2500

حاجز أمان فولاذي

Стальная горизонтальная распорка



3

Çelik L Korkuluk 700*1050

Steel L Guardrail 700*1050

فولاذي L حاجز أمان

Стальное L - ограждение



7

Çelik Diagonal 3200 (H:200 L:250)

Steel Diagonal 3200 (H:200 L:250)

قضيب فولاذي قطري

Стальная диагональ

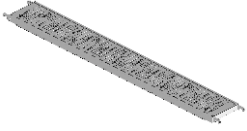
8



Çelik Diyagonal 2692 (H:100 L:250)
Steel Diagonal 2692 (H:100 L:250)

قضيب فولاذي قطري
Стальная диагональ

9



Roll Form Çelik Platform 320*2500
Formed Steel Platform 320*2500

منصة فولاذية على صيغة قائمة
Профиль стальной платформы

10



Merdivenli Çelik Platform 640*2500
Steel Ladder Platform 640*2500

منصة فولاذية ذات سلالم
Стальная платформа с лестницей

11



Çelik Başlangıç Elamanı 700
Steel Start Element 700

عنر بداية فولاذي
Стальной начальный элемент

12



Çelik Alt Ayar Mili 500
Steel Bottom Adjusting Spindle 500

قضيب ضبط سفلي فولاذي
Нижняя регулируемая стальная ось

13



Çelik Alt Ayar Mili 1000
Steel Bottom Adjusting Spindle 1000

قضيب ضبط سفلي فولاذي
Нижняя регулируемая стальная ось

14



Cephe Bağlantı Elemanı 1200
Facade Connection Element 1200

عنصر ربط الجبهة
Элемент крепления фасаду

15



Topuklu Çelik Yan Korkuluk
Heeled Steel Side Guard

حاجز أمان ثانوي فولاذي ذات كعب
Стальное боковое ограждение с пяткой

16



Çelik Topukluk 2500
Steel Heel Guard 2500

كعب فولاذي
Стальная пятка

17



Çelik Konsol 700
Steel Cantilever

وحدة تحكم فولاذية
Стальная консоль

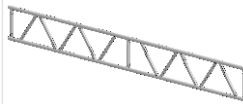
18



Çelik Konsol Payandası
Steel Cantilever Strut

مداد لوحدة التحكم الفولاذية
Стальная консольная стойка

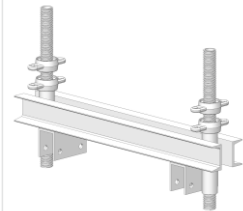
19



Çelik Kafes Kiriş 5250
Steel Lattice Beam 5250

حزام القفص الفولاذي
Стальная балочная ферма

20



Kafes Kiriş Bağlantı Aparatı
Steel Lattice Beam Connector

عنصر ربط حزام القفص
Соединительный узел балочной фермы

21



Çelik Dövme Dönerli Kelepçe 48*48
Steel Forging Swivel Clamp 48*48

مشبك كلاب صلب و دوار .
Поворотный зажим из ковальной стали

Panomod®

Frame Type Safe Facade Scaffolding System

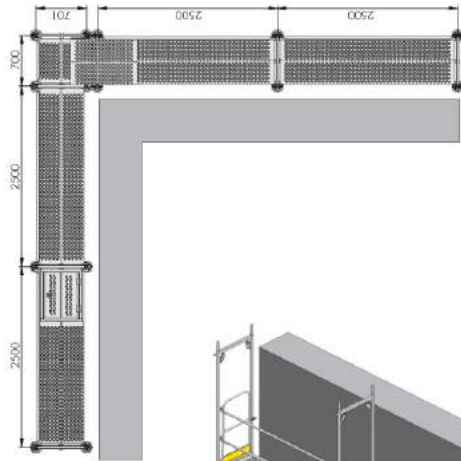
Panomod scaffolding system is frame type safe scaffolding system generally used in facade applications. Highly developed in terms of occupational safety, preventive measures for possible occupational accidents have been maximized in Panomod scaffolding system. Panomod Scaffolding System has been designed and manufactured in compliance with TS EN 12810-1, TS EN 12810-2, TS EN 12811-1 and TS EN 12811-2 standards. Scaffolding system has TSE Certificate.

System Specifications

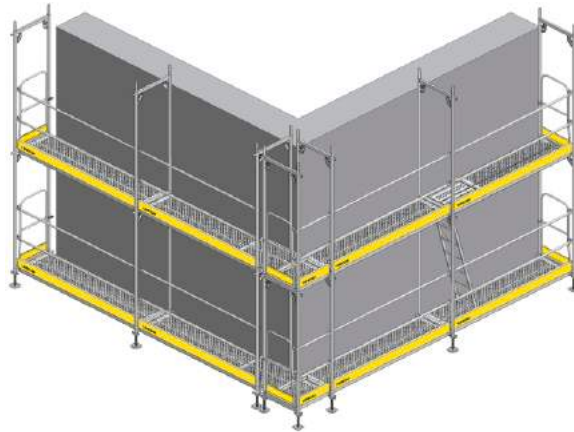
- Panomod TSE label is YAPEKSAN TS EN 12810 – 4D – SW06/250 – H1 – A/B – LA, H TYPE.
- Scaffolding width class according to TS EN 12811-1 SW06 maximum span measurement is 250.
- Scaffolding System has been designed according to Load Class 4 provided in TS EN 12811-1 standard, Schedule 3.
- Panomod scaffolding heading distance is H1.
- Panomod scaffolding system is frame H TYPE model.
- Scaffolding elements are coated with hot-dip galvanized according to C3 coating class against corrosion.
- There are horizontal (guardrail) elements as main guardrail and intermediate guardrail in each unit of the system.
- 2 adjacent fixed steel platforms are used in each working deck. These platforms work in locked state in the system and they may not be accidentally dismantled during the work.
- Safe access is provided between working decks by using cover and stair access platforms in Panomod scaffolding system. Stair systems are collapsible and lockable state.
- System is installed on initial legs with base supports performing precision height adjustment.
- There are side guardrail elements on corner frames in terms of safety; each unit has steel toes in 15cm height for preventing material drop from working platforms.
- System is fixed to the facade with the help of pipe type special connection elements.
- In the system, frame posts are manufactured from Ø48,3x3 mm steel industrial pipe, horizontal elements from Ø34x2 mm, diagonal elements from Ø42,4x2,5 mm.
- Entire system is manufactured from pipe and box profiles made of mechanical conformity tests with TSE certification.
- Welded joints are made with gas metal arc welding by certified welders.

Material Characteristic

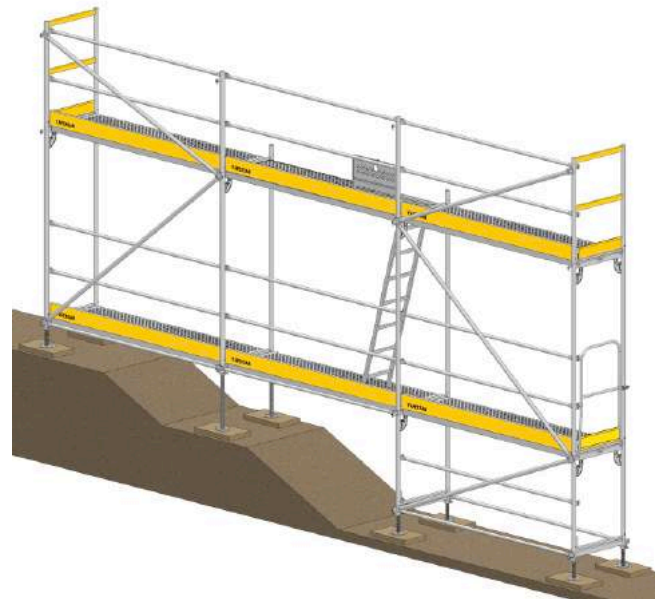
Industrial pipes and box profiles manufactured from S235JR structural steel (Yield Strength = 235 MPa) in accordance with DIN 2394, TS EN 10305-3, TS EN 10219-1/2 norms have been used in all scaffolding elements.



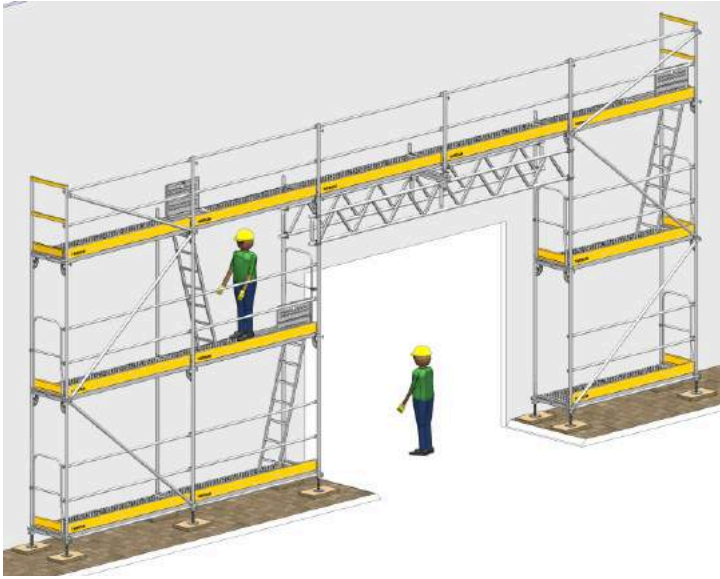
Safe passage between facades can be achieved on building corners with Panomod Frame type scaffolding system. Passage clearance can be created between the scaffolds with 70 cm short pieces in these corners whether the corners where scaffolds erected on different facades intersect are convex or concave. These passage units can be installed as a whole together with the scaffolding group from one direction and they can be connected with double clamping system and connection pipes to the scaffolding system from other direction. As horizontal guardrail and side guardrail systems are used in outer edges of passage sections, a safe system is formed on these sections.



While erecting facade scaffolds, it is of high importance that the lowest deck of scaffolding must be taken to the scales. Base placement is of utmost importance for smooth and proper installation of scaffold and a safe system. Panomod scaffolding system has a wide range of product designs that shall perform suitable installation procedure under different ground conditions. Scattering system can be taken to the scales with the help of adjustable legs and short frames under any elevation differences of ground. Overlapping length should be left as either minimum 15 cm in adjustable legs or 25% of adjusting spindle length. (whichever is greater). This overlapping length in Yapeksan branded adjustable legs has been designed in such a manner that shall meet the requirements of relevant standard. Rotating adjusting nuts to the extent of minimum overlapping distance value has been prevented with the design and this minimum overlapping portion has been marked with varied colour.



Main guardrail, intermediate guardrail, side guardrail and toe system are used in each working deck of Panomod scaffolding system. Access between scaffolding decks is provided with interior cover stairs. Providing access within scaffolding system, once these stairs are opened for use, they work in a manner that its ground shall be platforms and they can be folded on top and locked when it is worked on that section. Locking system of access clearance cover that is the part of access platforms and locking system of access stairs have been designed in such a manner that shall be opened both from upper and lower deck of the scaffolding. Safety measure provided with side guardrails on short edges of the scaffolding is ensured with finishing frames on the top deck of the scaffolding.

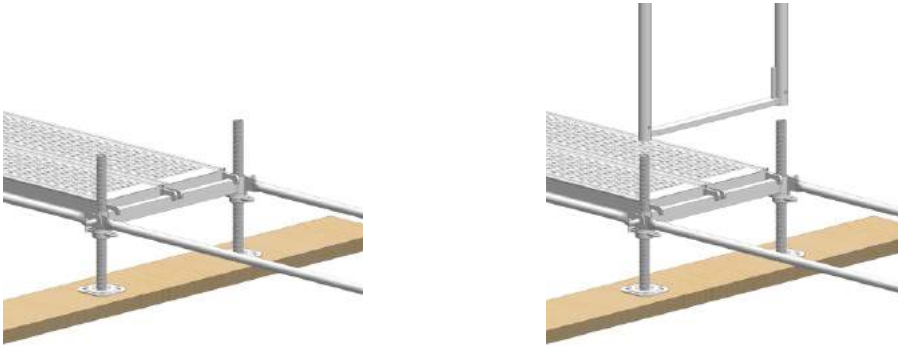


The scaffolds erected for the facade works of the structures in use pose an obstruction to daily operation in some cases. Steel case beam system has been designed for eliminating this problem in Panomod scaffolding system. Steel case system is used in installation of the scaffold for forming a safe passage corridor under the scaffold on the areas such as car park entrance, front of stores and loading ramps. In this way, works are maintained without disrupting their normal flows. As scaffolding leg has no chance to apply pressure on ground in a post axle on the ground where the scaffolding is to be erected, a safe installation can be carried out with steel case beam system.

Where facade scaffolding is erected on an active street or pavement, if working area is not possible to be blocked for pedestrian traffic, a safe passage corridor must be created by adopting additional safety measure under the scaffolding system. Solution must be generated in this regard by using passage pieces and on Panomod scaffolding system. Pedestrian passage pieces are used in a way that is blocked with steel platforms over them and open bottom in width that can be passed through at ease. Pedestrian passage pieces have been designed as a strong carrier system in a manner that shall not disrupt sound structure of scaffolding system.



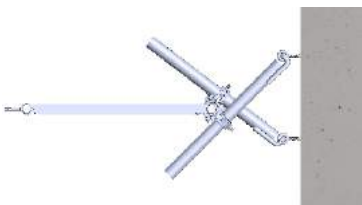
Working areas extended towards the facade or outside from the facade can be created by using console pieces in Panomod scaffolding system. A safe working environment is provided by using a console system on inward recessed surface on the facade or upper parapet protrusions of buildings. Panomod scaffolding system has options of console system in double platform width and single platform width.



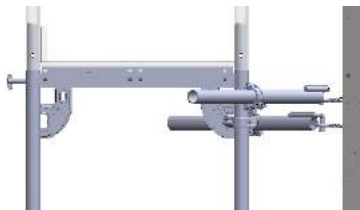
Steel platforms used in Panomod scaffolding system can be used without any torsion or right-left rotation with their special cap designs. Once an upper deck of scaffolding system is created, platforms are locked in the system and enables to take measures against accidental climbing up. Operation of platform cap system with unnecessary and non-excessive hollow designed in a sound and ergonomic structure contributes a positive effect in static structure of scaffolding system.



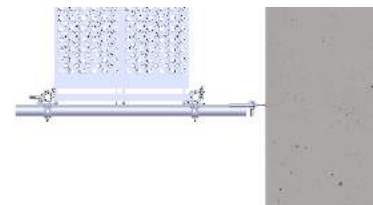
Overlapping pipes of scaffolding legs should be non-oscillating and sound structure on the same axis with scaffolding posts for providing vertical continuity on the scaffolding system and post axle. Shrink fit overlapping system fixed with hydraulic node method from 8 points in Yapeksan scaffolding systems. Overlapping pipes are manufactured from circular steel pipes with 4mm wall thickness for safely carrying all inner and outer forces likely to occur in scaffolding joint points. Edge pieces of overlapping pipes shall be rounded for providing installation ease and have been turned into countersunk form.



View from top



Side View



View from top

Pipe type facade connection elements are used in Panomod scaffolding system. All horizontal loads from vertical and parallel direction to the scaffolding can be safely carried with pipe type facade connection system. Rigid structure of connection system enables both pressure and traction impacts to exhibit a positive behaviour. Facade connections are used in angle connection types or connected from double posts and from single post as to static project in scaffolding system.



15012000
15011000

Çelik Çerçeve
Steel Frame
أطار فولاذي
Стальная ра

700*2000
700*1000

19,20 Kg
12,73 Kg



15020070

Çelik Başlangıç Elamanı
Steel Start Element
عنر بداية فولاذي
Стальной начальный элемент

700

2,55 Kg



15031050

Çelik L Korkuluk
Steel L Guardrail
فولاذي L حاجز أمان
Стальное L-ограждение

700*1050

5,90 Kg



15031100

Çelik Bitiş Korkuluk
Steel Finish Handrails
حاجز أمان نهاية فولاذية
Стальное финишное
ограждение

700*1100

14,13 Kg



16030320		320*700	6,23 Kg
16030321	Roll Form Çelik Platform <i>Formed Steel Platform</i> منصة فولاذية على صيغة قائمة Профиль стальной платформы	320*1000	8,20 Kg
16030322		320*1500	11,82 Kg
16030323		320*2000	15,70 Kg
16030324		320*2500	18,22 Kg



16023640	Merdivenli Çelik Platform <i>Steel Ladder Platform</i> منصة فولاذية ذات سلالم Стальная платформа с лестницей	640*2500	42,64 Kg
16023641		640*2000	37,00 Kg
16023642		640*1500	




16160700		700	1,00 Kg
16161000	Çelik Yatay <i>Steel Horizontal Brace</i> قضيب أفقي فولاذي Стальная горизонтальная распорка	1000	1,45 Kg
16161500		1500	2,18 Kg
16162000		2000	2,91 Kg
16162500		2500	3,64 Kg

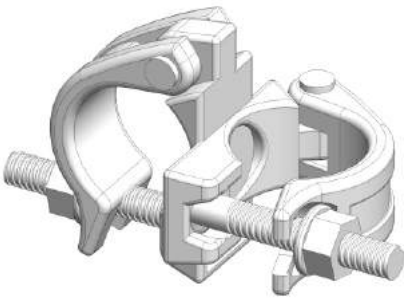


16201413		1413 (H:100 L:100)	3,38 Kg
16201802		1802 (H:100 L:150)	4,32 Kg
16202120		2120 (H:150 L:150)	5,03 Kg
16202235	Çelik Diagonal <i>Steel Diagonal</i> قضيب فولاذي قطري Стальная диагональ	2235 (H:200 L:100)	5,35 Kg
16202498		2498 (H:200 L:150)	6,00 Kg
16202692		2692 (H:100 L:250)	6,46 Kg
16202827		2827 (H:200 L:200)	6,76 Kg
16202915		2915 (H:150 L:250)	6,97 Kg
16203200		3200 (H:200 L:250)	7,69 Kg

	16070800	<p>Topuklu Çelik Yan Korkuluk <i>Heeled Steel Side Guard</i> حاجز أمان ثانوي فولاذي ذات كعب Стальное боковое ограждение с пяткой</p>		5,96 Kg

	16080700		700	2,82 Kg
	16081000	Çelik Topukluk <i>Steel Heel Guard</i>	1000	2,42 Kg
	16081500	حاجز أمان ثانوي فولاذي ذات كعب	1500	5,04 Kg
	16082000	Стальная пятка	2000	5,85 Kg
	16082500		2500	6,30 Kg

	16090480	Çelik Dövme Dönerli Kelepçe <i>Steel Forging Swivel Clamp</i>	48*48	1,04 Kg
	16090600	مشبك كلاب صلب و دوار Поворотный зажим из ковальной стали	48*60	

	16090481	Çelik Dövme Sabit Kelepçe <i>Steel Forging Double Clamp</i> مشبك كلاب صلب و ثابت Неподвижный зажим из ковальной стали	48*48	1,00 Kg



16090482

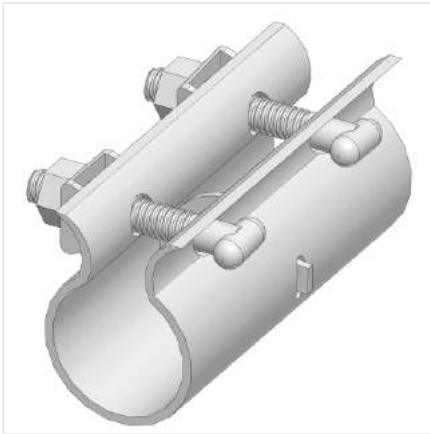
Çelik Dövme Kiriş Kelepçesi
Steel Forging Beam Clamp

مشبك كلاب للحافة

Балочный зажим
из кованой стали

48*48

1,39 Kg



16090483

Çelik Boru Birleştirme Kelepçesi
Steel Pipe Joint Clamp

مشبك كلاب لربط الانابيب الفولاذية

Стальной соединительный
зажим трубы

ø48

1,08 Kg



16150500

Çelik Alt Ayar Mili
Steel Bottom Adjusting Spindle

500

2,72 Kg

16150750

قضيب ضبط سفلي فولاذي

750

3,89 Kg

16151000

Нижняя регулируемая
стальная ось

1000

4,56 Kg



16110380

Çelik Konsol
Steel Cantilever

380

5,04 Kg

16110700

وحدة تحكم فولاذية

700

8,68 Kg

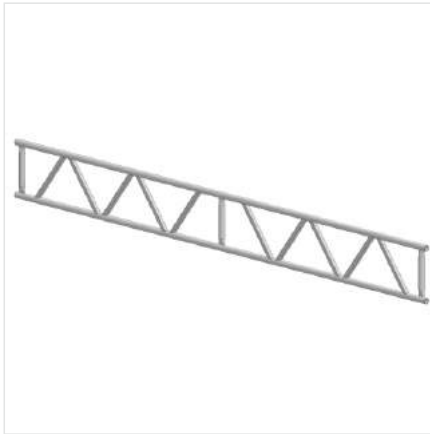
Стальная консоль



16121960

Çelik Konsol Payandası
Steel Cantilever Strut
مداد لوحدة التحكم الفولاذية
Стальная консольная
стойка

6,12 Kg

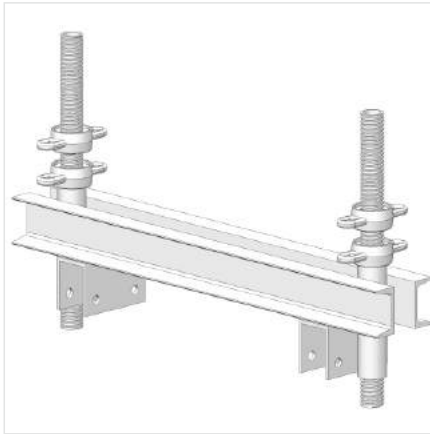


16180425
16180525

Çelik Kafes Kiriş
Steel Lattice Beam
حزام القفص الفولاذي
Стальная балочная ферма

4250
5250

50,00 Kg



16190000

Kafes Kiriş Bağlantı Aparatı
Steel Lattice Beam Connector
عنصر ربط حزام القفص
Соединительный узел
балочной фермы



16241400
16241730


Çelik Yaya Geçiş Çerçevesi
Steel Walk Thru Frame
أطار المعبر الأفقي الفولاذي
Стальная рама пешеходного
перехода

1400*2200
1730*2200

30,98 Kg

	16210250		250	1,16 Kg
	16210500		500	1,98 Kg
	16211000	Cephe Bağlantı Elemanı <i>Facade Connection Element</i> عنصر ربط الجبهة Элемент крепления фасаду	1000	3,59 Kg
	16211200		1200	4,80 Kg
	16211500		1500	5,15 Kg
	16212000		2000	6,80 Kg
	16212500		2500	8,32 Kg
	16213000		3000	9,90 Kg

	16230000	Ankraj <i>Anchor</i> مرسي Анкерное крепление		0,30 Kg

	16250250		250	0,82 Kg
	16250500		500	1,80 Kg
	16250750	Çelik Bağlantı Borusu <i>Steel Connection Pipe</i> أنبوب ربط فولاذي	750	2,70 Kg
	16251000		1000	3,79 Kg
	16251500	Стальная соединительная труба	1500	,60 Kg
	16252000		2000	6,60 Kg
	16253000		3000	9,90 Kg

	15031000	Çelik Korkuluk <i>Steel Guardrail</i> حاجز أمان فولاذي Стальное ограждение	1100	3,89 Kg



Müşterilerimizin ihtiyaçları doğrultusunda projelerinde teorik ve uygulamalı olarak eğitmenlerimiz tarafından eğitimler verilmektedir. Bu eğitim kapsamında projelerinde kullanılacak ürünlerin iş güvenliği kriterlerine uygunluğu ile birlikte teknik özellikleri, kullanım sistemi ve standartlara uygunluğu hakkında proje sorumlularına detaylıca bilgi verilmektedir.

Theoretical and practical trainings are provided by our trainers in line with the needs of our customers. Project supervisors are provided with detailed information regarding compliance of the products to be used in the projects within the scope of this training with occupational safety, technical specifications, utilization system and standards.

يتم تقديم خدمات التدريب العملية والنظرية من قبل مدربيننا في المشاريع حسب احتياجات العملاء. يتم في نظام البرنامج التعليمي تقديم المعلومات المفصلة الى مسؤولي المشروع بخصوص المستلزمات التي ستستخدم في المشاريع والالتزام بمعايير السلامة في

В соответствии с потребностями наших клиентов, наши преподаватели проводят курсы подготовки в теоретических и практических проектах. В рамках этих курсов подготовки, вместе критериями безопасности труда в отношении используемой в проектах продукции, лицам, несущим ответственность за проект, предоставляется подробная информация о технических характеристиках, применении системы и соответствии стандартам.



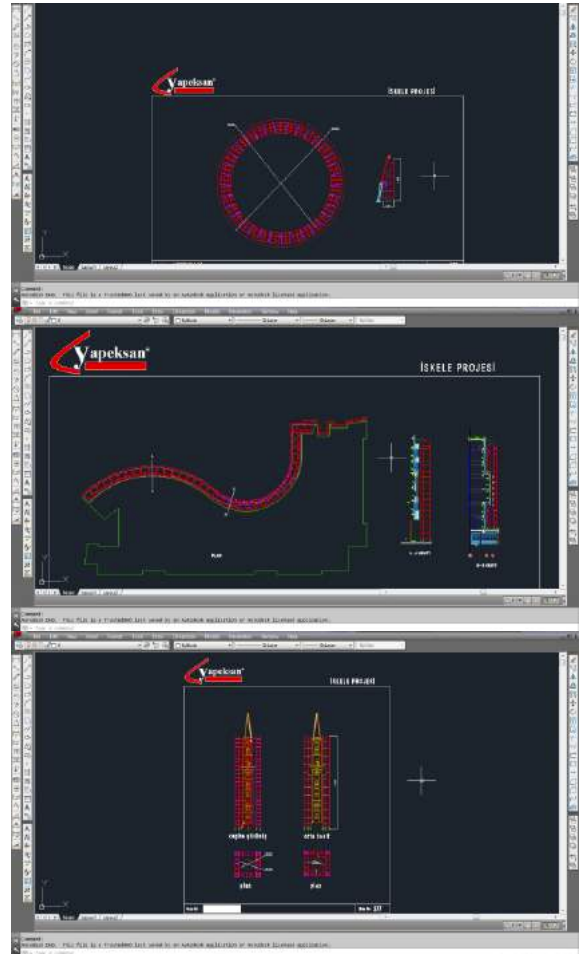


Yapeksan proje birimi, müşteri projelerine göre uygun olan iskele sistemini belirlemekte ve mimari projelerine göre iskele yerleşimini yapmaktadır.

Yapeksan project department identifies scaffolding systems suitable for customer projects and performs scaffolding placement based on architectural projects.

كما ويقوم وحدة مشاريع يبيكسان بتحديد نظام السقالة المناسب حسب مشروع العميل و تنبئ السقالة حسب المشاريع المعمارية.

Проектный отдел Yapeksan, в соответствии с проектом клиента определяет самую подходящую систему строительных лесов и размещает строительные леса в соответствии с архитектурным проектом.





Üretimini yaptığımız sistemlerin stoktan satışını yaparak müşterilerine hızlı çözümler sunmaktayız. Ürünler, standart miktarlarda, marka etiketli, paketli, ambalajlanmış ve güvenli olarak müşterilere sevk edilmektedir.

We offer quick solutions to our customers by making sales of our systems from stocks. Products are shipped in standard quantities with brand label, package in a safe manner.

إننا نقدم الحلول السريعة الى عملائنا الاعزاء من خلال بيع الأنظمة التي نقوم بإنتاجها من المخزون. يتم شحن المنتجات بشكل مغلف ومصلق العلامة التجارية وبالكمية المعيارية بشكل آمن الى الزبائن.

Продавая со складов системы, которые мы выпускаем, мы предлагаем клиентам быстрые решения. Продукция отправляется клиентам надёжным способом, в стандартном количестве, с этикеткой торгового бренда, упакованная в пакеты.



Yapeksan, geniş ürün stoku ile müşterilerine hızlı ve esnek çözümler sunmaktadır. Yapeksan, kiralama hizmeti ile uzun süreli projelerde, depolama, bakım, onarım ve yatırım maliyeti gerektirmeden müşterilerine avantajlı çözümler sunmaktadır.

Yapeksan offers quick and flexible solutions to its customers with a wide range of stocks. With its leasing service, Yapeksan offers advantageous solutions to its customers without any need of storage, maintenance, repair and investment costs in long-term projects.



يقدم يبيكسان بمخزون منتجاتها الواسعة الحلول السريعة والمرنة الى عملائها الأعزاء. كما ويقوم يبيكسان بتقديم الحلول المميزة الى عملائها الأعزاء بواسطة خدمة التأخير دون تكاليف تخزين وصيانة وتصليح واستثمار في المشاريع الطويلة الأجل.

Yapeksan, с обширным запасом готовой продукции, предлагает клиентам быстрые и гибкие решения. Yapeksan, оказывая арендные услуги, для долгосрочных проектов предлагает клиентам выгодные решения, не требующие наличия складов, выполнения обслуживания и вложения средств.



YAPEKSAN YAPI EKİPMANLARI SAN. ve TİC. A.Ş.

Mustafa Kemal Paşa Mah. Eski Edirne Asfaltı No: 20/A
Avcılar - 34320 İstanbul / TÜRKİYE

+90 212 423 33 78
+90 212 423 24 70
info@yapeksan.com.tr
www.yapeksan.com.tr



İSKELE KALIP
SANAYİCİLERİ
DERNEĞİ