



 **Yapeksan[®]**

2017



İskele Kalıp Sistemleri

Scaffolding Formwork Systems

أنظمة قوالب السقالة

Системы строительных лесов для опалубки

Since 2000



Panomod®

ÇERÇEVE TİP CEPHE İSKELESİ SİSTEMİ
FRAME TYPE FACADE SCAFFOLDING SYSTEM

نظام سقالة جبهة نوع أطار

СИСТЕМА СТРОИТЕЛЬНЫХ ЛЕСОВ ДЛЯ ФАСАДА РАМНОГО ТИПА



Flamod®

FLANŞLI TİP İSKELE SİSTEMİ

Flanged Type Scaffolding System

نظام سقالة نوع ذات الحواف

СИСТЕМА СТРОИТЕЛЬНЫХ ЛЕСОВ ФЛАНЦЕВОГО ТИПА



Mobilmod®

ÇERÇEVE TİP MOBİL İSKELE SİSTEMİ

FRAME TYPE MOBILE SCAFFOLDING SYSTEM

نظام سقالة متحركة نوع أطار

МОБИЛЬНАЯ СИСТЕМА СТРОИТЕЛЬНЫХ ЛЕСОВ РАМНОГО ТИПА



Masamod®

ÇERÇEVE TİP KALIP İSKELESİ SİSTEMİ

FRAME TYPE SHORING SCAFFOLDING SYSTEM

نظام سقالة قالب نوع أطار

СИСТЕМА СТРОИТЕЛЬНЫХ ЛЕСОВ ДЛЯ ОПАЛУБКИ РАМНОГО ТИПА



Kulemod®

KOVANLI TİP KALIP İSKELESİ SİSTEMİ

TOWER TYPE SHORING SCAFFOLDING SYSTEM

نظام سقالة قالب ذات مساند

СИСТЕМА СТРОИТЕЛЬНЫХ ЛЕСОВ ДЛЯ ОПАЛУБКИ БАШЕННОГО ТИПА (ВЫШКИ-ТУРЫ)





Finmod®

FİNCANLI TİP KALIP İSKELESİ SİSTEMİ

CUP LOCK TYPE SHORING SCAFFOLDING SYSTEM

نظام سقالة قالب ذات شكل فنجانى

СИСТЕМА СТРОИТЕЛЬНЫХ ЛЕСОВ ДЛЯ ОПАЛУБКИ ЧАШЕЧНОГО ТИПА



Telmod®

TELESKOPIK TİP KALIP İSKELESİ SİSTEMİ

TELESCOPIK PROP TYPE SHORING SCAFFOLDING SYSTEM

نظام سقالة قالب نوع تلسكوبىك

СИСТЕМА СТРОИТЕЛЬНЫХ ЛЕСОВ ДЛЯ ОПАЛУБКИ

ТЕЛЕСКОПИЧЕСКОГО ТИПА



Mermod®

ÇERÇEVE TİP MERDİVEN KULESİ İSKELE SİSTEMİ

FRAME TYPE STAIR TOWER SCAFFOLDING SYSTEM

نظام سقالة قالب ذات سلالم نوع إطار

СИСТЕМА СТРОИТЕЛЬНЫХ ЛЕСОВ РАМНОГО ТИПА, ЛЕСТНИЦЫ-БАШНИ



Aksesuar

AKSESUARLAR

ACCESSORIES

الأكسسوارات

АКСЕССУАРЫ





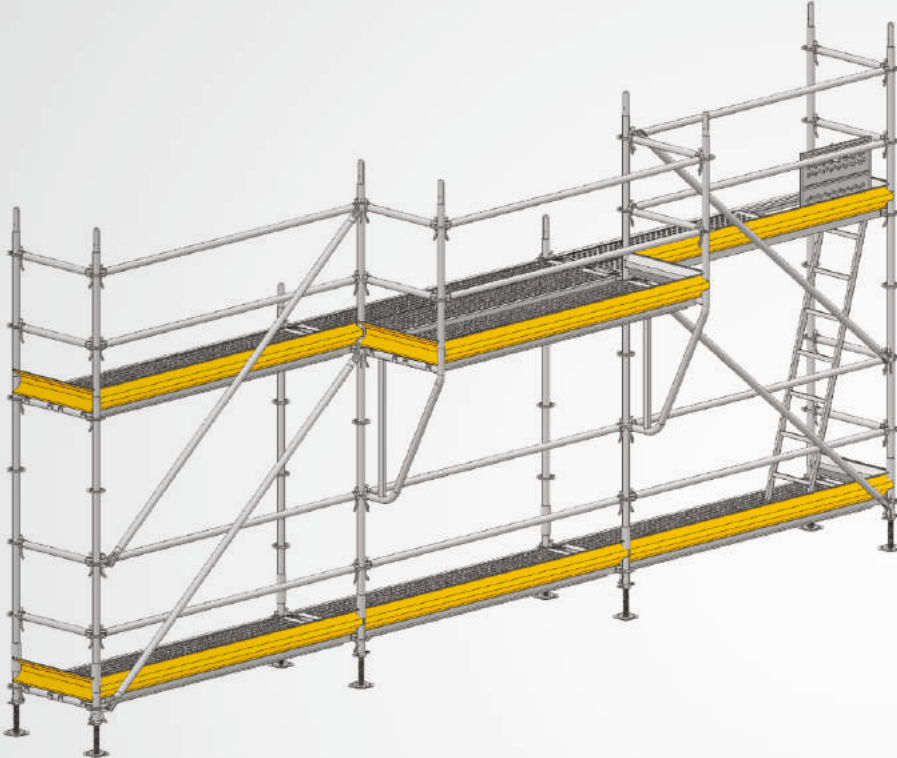
FLANŞLI TİP İSKELE SİSTEMİ

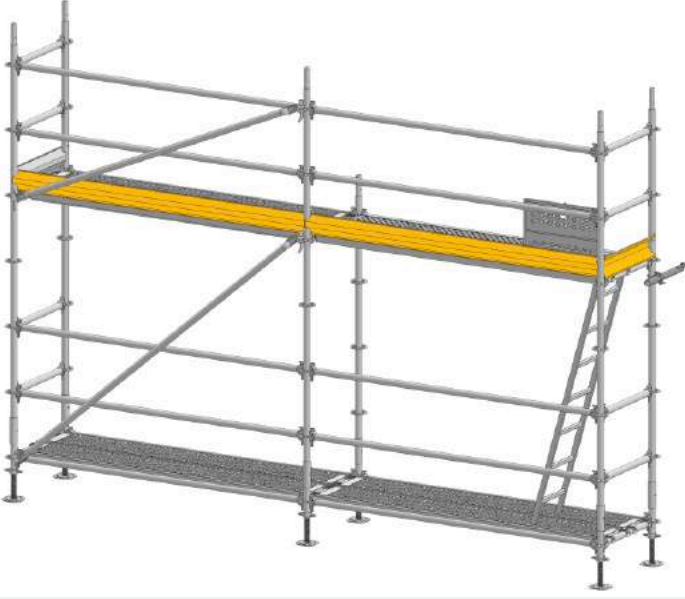
FLANGED TYPE SCAFFOLDING SYSTEM

نظام سقالة نوع ذات الحواف

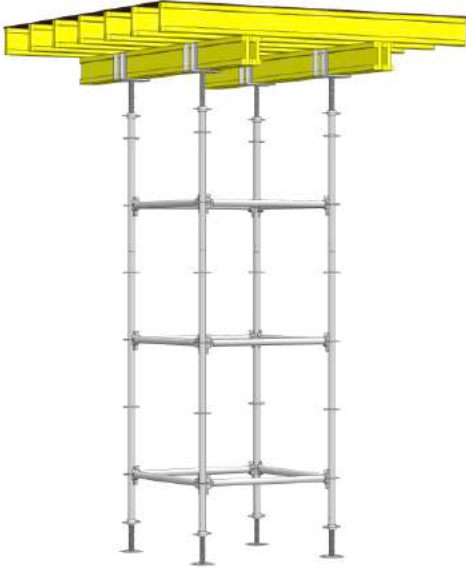
СИСТЕМА СТРОИТЕЛЬНЫХ ЛЕСОВ ФЛАНЦЕВОГО ТИПА

Flamod®





СЕРПЕ İSKELESİ
FACADE SCAFFOLD
سقالة الجبهة الخارجية
СТРОИТЕЛЬНЫЕ ЛЕСА ДЛЯ ФАСАДА

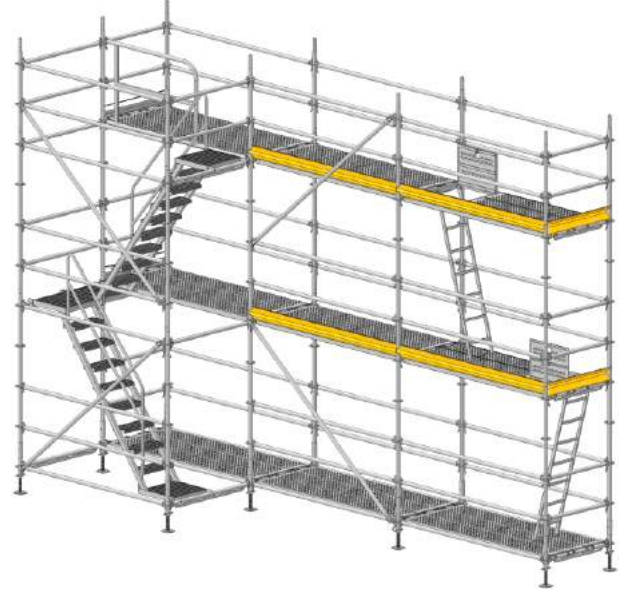


KALIP İSKELESİ
FORMWORK SCAFFOLDING
سقالة قالب
СТРОИТЕЛЬНЫЕ ЛЕСА ДЛЯ ФАСАДА

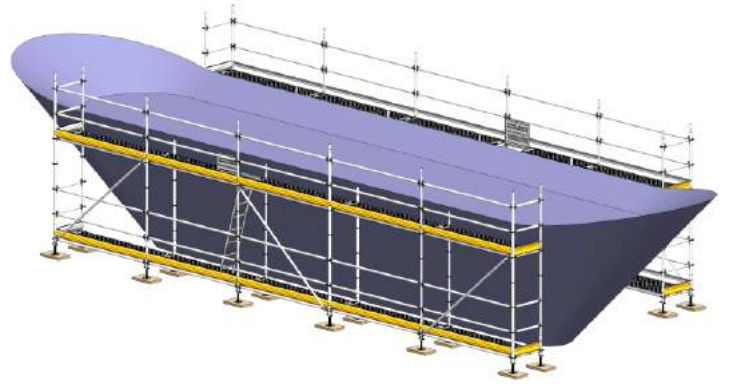


MODÜLER HACİM İSKELE
MODULAR VOLUME SCAFFOLDING
سقالة حجم متحركة
ИНДУСТРИАЛЬНЫЕ ПРЕДПРИЯТИЯ

ENDÜSTRİYEL TESİSLER
INDUSTRIAL FACILITIES
المنشآت الصناعية
ИНДУСТРИАЛЬНЫЕ ПРЕДПРИЯТИЯ

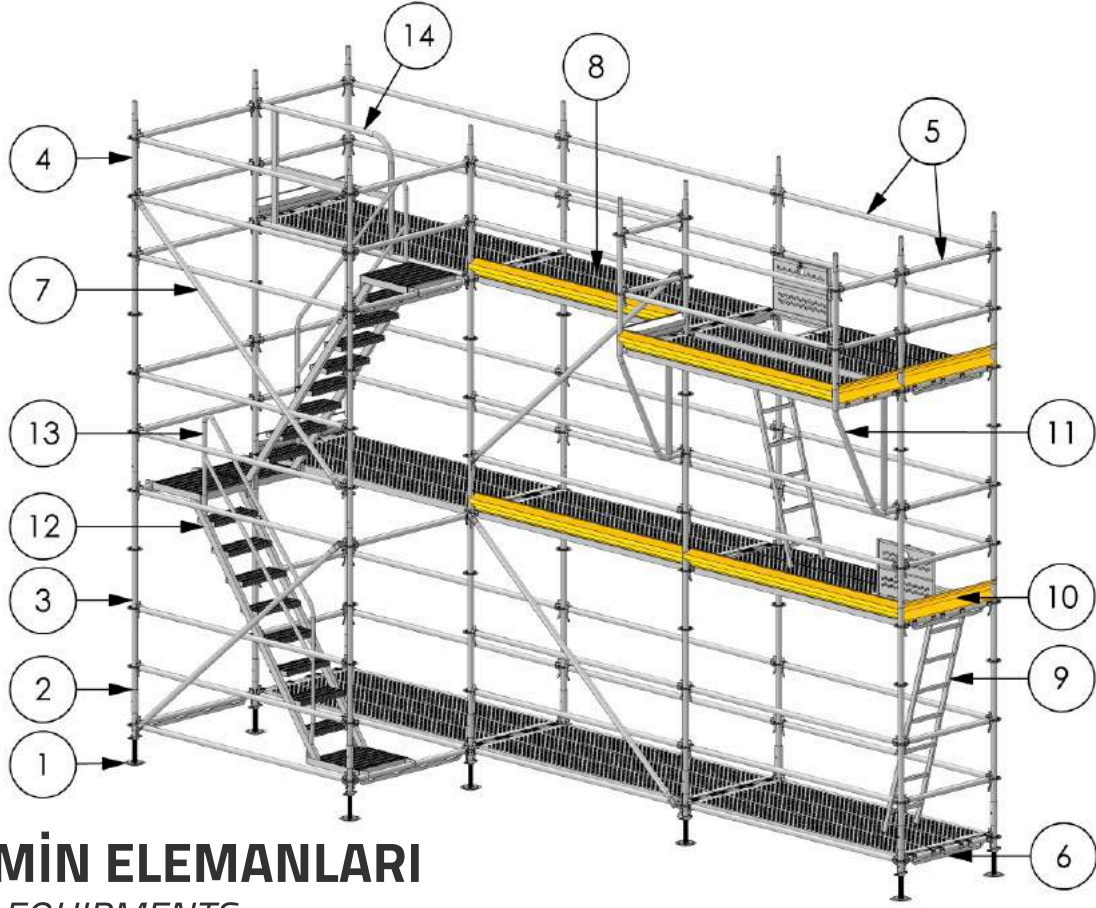


GEMİ İNŞAAT SANAYİ
SHIP BUILDING INDUSTRY
أنشاء وصناعة السفن
СУДОСТРОИТЕЛЬНАЯ ПРОМЫШЛЕННОСТЬ



MODÜLER DEMİRCİ İSKELESİ
MODULAR FORGE SCAFFOLDING
سقالة حداد متحركة
МОДУЛЬНЫЕ ЛЕСА АРМАТУРЩИКА





SİSTEMİN ELEMANLARI

SYSTEM EQUIPMENTS

عناصر النظام

ЭЛЕМЕНТЫ СИСТЕМЫ



1

Çelik Alt Ayar Mili 500
Steel Bottom Adjusting Spindle 500
قضيب ضبط سفلي فولاذي
Стальная нижняя регулируемая ось



4

Flanşlı Çelik Dikme 2F 1000
Flange-Type Steel Prop 2F 1000
داعم فولاذي ذات عقدة
Стальная стойка с фланцем



2

Çelik Başlangıç Elmanı 400
Steel Start Element 400
عنصر ذات بداية فولاذية
Стальной начальный элемент



5

Çelik Yatay 2500
Steel Horizontal 2500
قضيب أفقي صلب
Стальная горизонтальная распорка



3

Flanşlı Çelik Dikme 4F 2000
Flange-Type Steel Prop 4F 2000
داعم فولاذي ذات عقدة
Стальная стойка с фланцем



6

Güçlendirilmiş Çelik Yatay 1080
Reinforced Steel Horizontal 1080
قضيب أفقي صلب مقوة
Усиленная стальная
горизонтальная распорка



7

Çelik Diyagonal 3200 (H:200 L:250)

Steel Diagonal 3200 (H:200 L:250)

قضيب فولاذي قطري

Стальная диагональ



8

Roll Form Çelik Platform 320*2500

Formed Steel Platform 320*2500

منصة فولاذية على صيغة قائمة

Профиль стальной платформы



9

Merdivenli Çelik Platform 640*2500

Steel Ladder Platform 640*2500

منصة فولاذية ذات سلالم

Стальная платформа с лестницей



10

Çelik Topukluk 150*1080

Steel Heel Guard 150*1080

كعب فولاذي

Стальная пятка



11

Çelik Konsol 700

Steel Cantilever 700

وحدة تحكم فولاذية

Стальная консоль



12

Çelik Merdiven

Steel Ladder

سلالم فولاذية

Стальная лестница



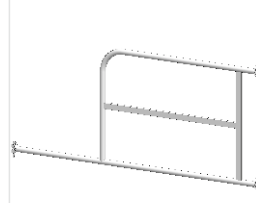
13

Çelik Merdiven Korkuluğu

Steel Ladder Handrails

حاجز أمن سلالم فولاذية

Стальное ограждение лестницы



14

Çelik Kule Geçiş Korkuluğu

Steel Frame Handrails

حاجز أمن للعبور في البرج الفولاذي

Стальной переходник ограждения башни

Flamod®

Flanged Type Scaffolding System

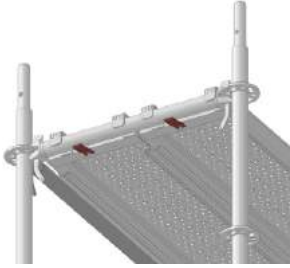
Flamod scaffolding system is a flanged scaffolding system used in facade applications and under formwork. Flamod Facade Scaffolding System has been designed and manufactured in compliance with TS EN 12810-1, TS EN 12810-2, TS EN 12811-1 and TS EN 12811-2 standards. Scaffolding system has TSE Certificate.

System Specifications

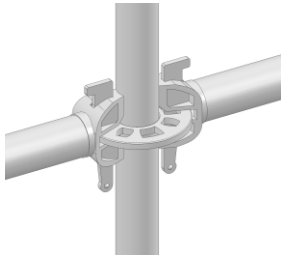
- Flamod TSE label is YAPEKSAN TS EN 12810 – 4D – SW06/250 – H1– A/B – LA, FLANGE TYPE.
- Scaffolding width class according to TS EN 12811-1 SW06 maximum span measurement is 250.
- Scaffolding System has been designed according to Load Class 4 provided in TS EN 12811-1 standard, Schedule 3.
- Flamod scaffolding heading distance is H1.
- Flamod scaffolding system is a Flanged Type scaffolding model.
- Scaffolding elements are coated with hot-dip galvanized according to C3 coating class against corrosion.
- There are horizontal (guardrail) elements as main guardrail and intermediate guardrail in each unit of the system.
- 2 adjacent fixed steel platforms are used in each working deck. These platforms work in locked state in the system and they may not be accidentally dismantled during the work.
- Safe access is provided between working decks by using cover and stair access platforms in Flamod scaffolding system. Stair systems are collapsible and lockable state.
- System is installed on initial legs with base supports performing precision height adjustment.
- There are side guardrail elements on corner clearances in terms of safety; each unit has steel toes in 15cm height for preventing material drop from working platforms.
- System is fixed to the facade with the help of pipe type special connection elements.
- In the system, posts are manufactured from Ø48,3x3 mm steel industrial pipe, horizontal elements from Ø48,3x2,5 mm, diagonal elements from Ø48,3x2,5 mm.
- Entire system is manufactured from pipe and box profiles made of mechanical conformity tests with TSE certification.
- Welded joints are made with gas metal arc welding by certified welders.

Material Characteristic

Industrial pipes and box profiles manufactured from S235JR structural steel (Yield Strength =235 MPa) in accordance with DIN 2394, TS EN 10305-3, TS EN 10219- 1/2 norms have been used in all scaffolding elements.



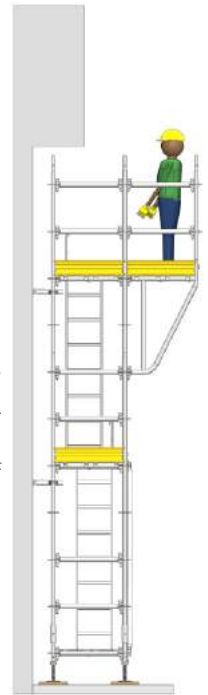
Flange-dovetail connection system is used in joint points of post and horizontal connections in Flamod scaffolding system. A rigid connection system is created with fitting procedure by way of driving steel wedges to flange connections of dovetail system on horizontal branches on the posts. Some portion of incoming horizontal loads to the scaffolding is carried thanks to built-in connection system having moment bearing capacity. In addition to this, adverse features such as oscillating and moving in the system are eliminated since there is no gap in the scaffolding due to rigid connection system.



Measure has been taken against accidental dislodgement and rotation during use on the platforms used in Flamod scaffolding system. Dislodgement of platforms has been secured with key system under the platforms.



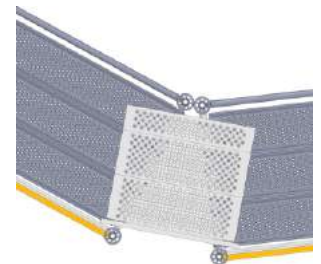
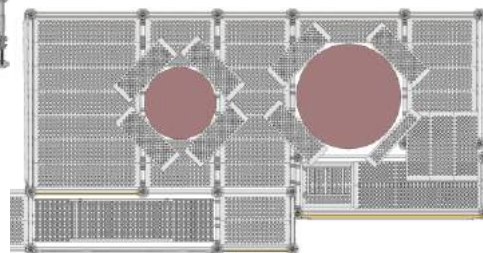
Working areas extended towards the facade or outside from the facade can be created by using console pieces in Flamod scaffolding system. A safe working environment is provided by using a console system on inward recessed surface on the facade or upper parapet protrusions of buildings. Flamod scaffolding system has options of console system in three platform width and single platform width and double platform width.



MODULAR VOLUME SCAFFOLDING

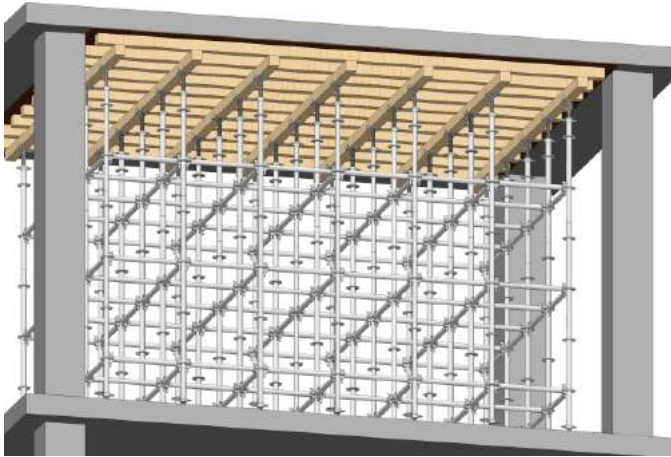
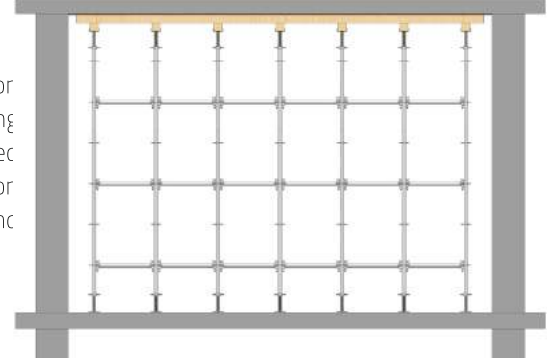


Flamod scaffolding system offers optimum solutions in industrial facilities. Safe working environments can be created with Flamod scaffolding system in the locations including complex solid objects and tanks, flues and volumetric installations. Platforms units can be generated in desired levels and width and stair systems can be integrated for safe access.

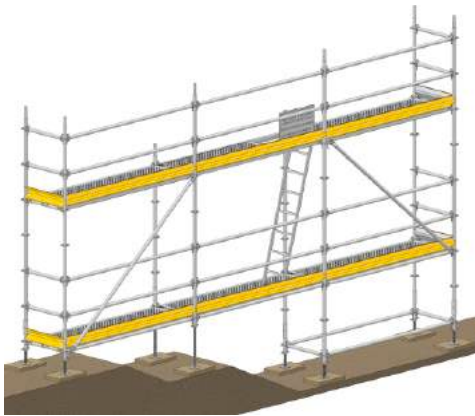


FORMWORK SCAFFOLDING

Flamod scaffolding system can also be used as formwork scaffolding. Installation alternatives are offered in varying measurements in post clearances based on flooring load and bearing calculation. Vertical clearances of horizontal connection are identified based on the load required to be carried and the safest and the most economical solution can be generated. Use of the same parts of Flamod scaffolding system as facade and working scaffolding provides flexibility to the system.



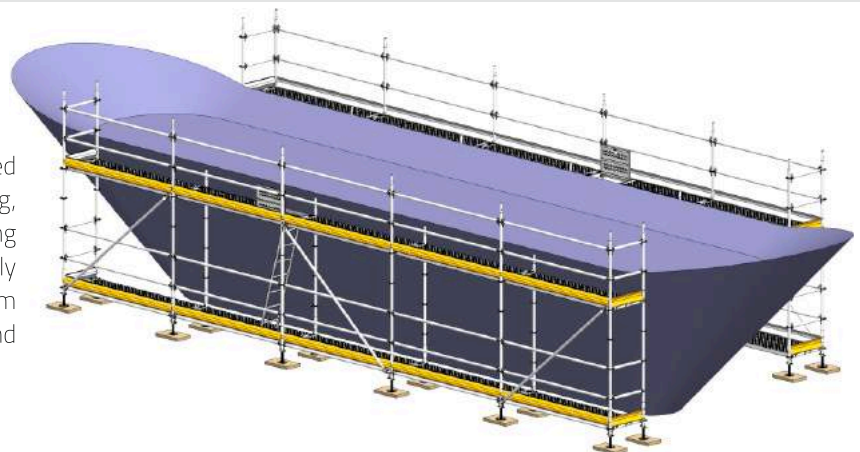
FACADE SCAFFOLDING



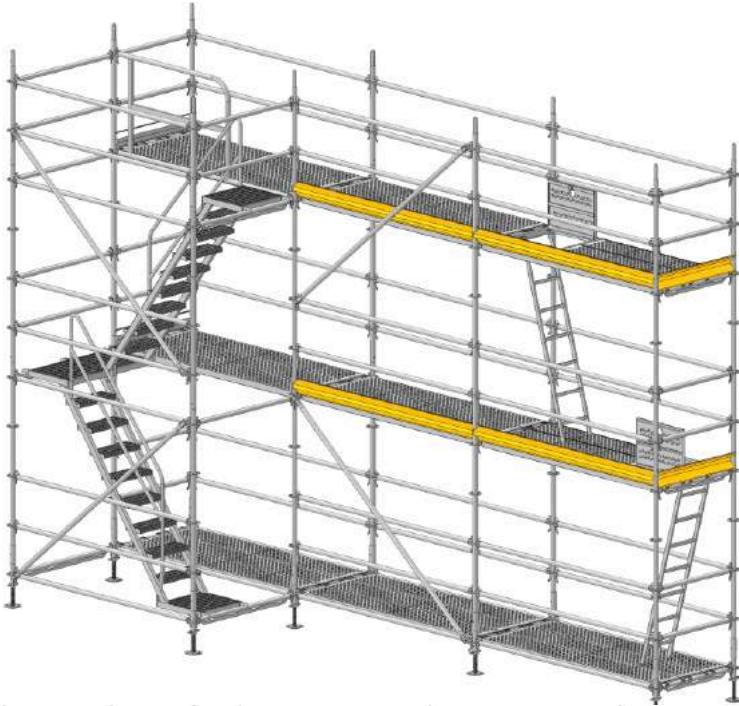
Flamod scaffolding system is a scaffolding system with fitting procedure with flange-dovetail joint of post and horizontal connections and made of post and horizontal connections as main pieces used in facade works. It is a scaffolding system having feature of being used at all facade types. As there are flange connection points at each 50cm height over the posts, platform level can be generated at desired height. Horizontal guardrail can be generated in each desired direction in the scaffolding system.

SHIP BUILDING INDUSTRY

The most suitable working platforms can be generated with Flamod scaffolding system for ship building, maintenance and repair works. Working areas in varying width and heights on the inclined surfaces can be easily accessed with Flamod scaffolding system. Platform units can be generated in desired width and sections and safe access stairs can be used.

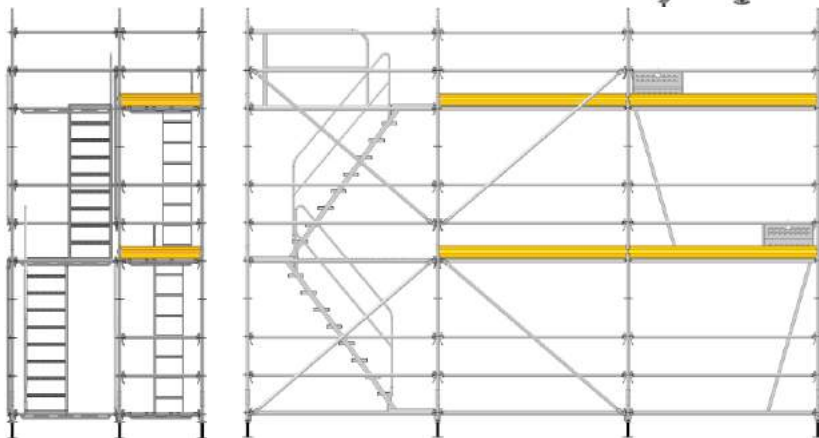


INDUSTRIAL FACILITIES



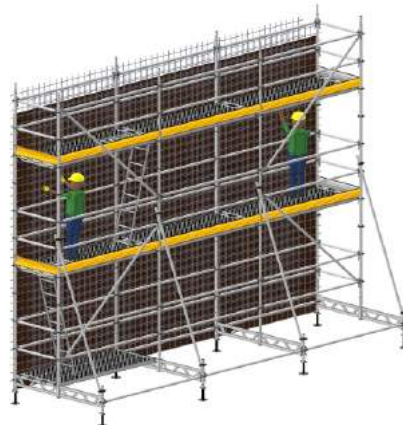
Several platforms can be installed in adjacent manner with horizontal connection elements reinforced in different measurements of Flamod scaffolding system and offer wider working areas. In addition to this, easy integration of safe access stairs in different designs enables the scaffolding system to be more comfortable and safer.

Flamod scaffolding system can be installed in desired width and geometry. Interior cover stairs can be used in the scaffolding system and stair and platform stair units can also be generated as a whole with the system outside the working area. All parts of Flamod scaffolding system can be used for multi-purpose and flexible solutions are generated.



MODULAR FORGE SCAFFOLDING

Flamod scaffolding system can also be used as work scaffolding in a manner that can be safely operated at varying heights without using any facade connection in the works such as reinforcement anchorage, formwork formation and concrete casting in the construction. The system so created can be displaced as a whole without dismantling. Safety measure is taken by creating inner and outer horizontal guardrail with Flamod scaffolding





13010500		1F 500	3,05 Kg
13011000	Flanşlı Çelik Dikme Flange Type Steel Prop داعم فولاذي ذات عقدة Стальная стойка с фланцем	2F 1000	5,15 Kg
13011500		3F 1500	7,12 Kg
13012000		4F 2000	9,23 Kg
13012500		5F 2500	11,25 Kg
13013000		6F 3000	13,22 Kg



13060250		250	1,65 Kg
13060440		440	1,95 Kg
13060760		760	2,92 Kg
13061000		1000	3,48 Kg
13061080		1080	3,69 Kg
13061400	Çelik Yatay Steel Horizontal ضبيب أفقي صلب Стальная горизонтальная распорка	1400	4,50 Kg
13061500		1500	4,89 Kg
13061720		1720	
13061800		1800	
13062000		2000	5,52 Kg
13062040		2040	
13062360	2360		
13062500	2500	7,42 Kg	
13062680	2680		



13061081	Güçlendirilmiş Çelik Yatay Reinforced Steel Horizontal قضيب أفقي صلب مقوة Усиленная стальная горизонтальная распорка	1080	4,72 Kg
13061401		1400	



13061721
13062041
13062361
13062681

Güçlendirilmiş Çelik Yatay
Reinforced Steel Horizontal
قضيب أفقي صلب مقوة
Усиленная стальная
горизонтальная распорка

1720
2040
2360
2680

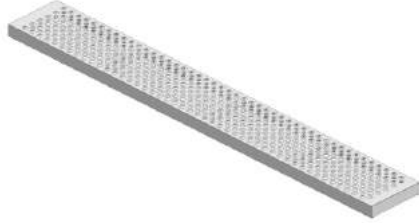


13081810

Çelik Plaka
Steel Plate
لوحة فولاذية
Стальная плита

180*1000

4,84 Kg



13083210
13083215
13083220
13083225

Çelik Plaka
Steel Plate
لوحة فولاذية
Стальная плита

320*1000
320*1500
320*2000
320*2500

6,88 Kg
16,72 Kg



14010761
14011000
14011500
14012000
14012500

Çelik Topukluk
Steel Heel Guard
كعب فولاذي
Стальная пятка

150*760
150*1000
150*1500
150*2000
150*2500

1,94 Kg
2,48 Kg
3,84 Kg
5,09 Kg
6,46 Kg



14100076	<p>Roll Form Çelik Platform Formed Steel Platform</p> <p>منصة فولاذية على صيغة قائمة</p> <p>Профиль стальной платформы</p>	320*760	8,52 Kg
14100100		320*1000	8,51 Kg
14100108		320*1080	8,52 Kg
14100150		320*1500	12,40 Kg
14100200		320*2000	15,57 Kg
14100250		320*2500	19,22 Kg



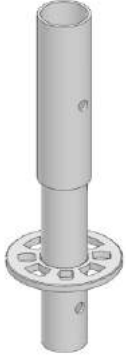
14026415	<p>Merdivenli Çelik Platform Steel Ladder Platform</p> <p>منصة فولاذية ذات سلالم</p> <p>Стальная платформа с лестницей</p>	640*1500	30,00 Kg
14026420		640*2000	39,44 Kg
14026425		640*2500	45,86 Kg



14041413	<p>Çelik Diyagonal Steel Diagonal</p> <p>قضيب فولاذي قطري</p> <p>Стальная диагональ</p>	1413 (H:100 L:100)	5,74 Kg
14041802		1802 (H:100 L:150)	5,94 Kg
14042094		2094 (H:100 L:200)	7,63 Kg
14042235		2235 (H:200 L:100)	
14042498		2498 (H:200 L:150)	7,89 Kg
14042692		2692 (H:100 L:250)	8,24 Kg
14042827		2827 (H:200 L:200)	8,54 Kg
14043200		3200 (H:200 L:250)	9,54 Kg



14060440	<p>Çelik Konsol Steel Cantilever</p> <p>وحدة تحكم فولاذية</p> <p>Стальная консоль</p>	440	6,22 Kg
14060760		760	7,38 Kg



14070400

Çelik Başlangıç Elmanı
Steel Start Element
عنصر ذات بداية فولاذية
Стальной начальный
элемент

400

2,40 Kg



14072040

Çelik Profil Başlangıç Elmanı
Steel Ladder Platform
عنصر ذات بداية إطار فولاذي
Стальной профильный
начальный элемент

2040

23,00 Kg



16180425

Çelik Kafes Kiriş
Steel Lattice Beam

4250

16180525

حزام القفص الفولاذي
Стальная балочная ферма

5250

50,00 Kg



16150500

Çelik Alt Ayar Mili
Steel Bottom Adjusting Spindle

500

2,72 Kg

16150750

قضيب ضبط سفلي فولاذي

750

3,89 Kg

16151000

Нижняя регулируемая
стальная ось

1000

4,56 Kg



Müşterilerimizin ihtiyaçları doğrultusunda projelerinde teorik ve uygulamalı olarak eğitmenlerimiz tarafından eğitimler verilmektedir. Bu eğitim kapsamında projelerinde kullanılacak ürünlerin iş güvenliği kriterlerine uygunluğu ile birlikte teknik özellikleri, kullanım sistemi ve standartlara uygunluğu hakkında proje sorumlularına detaylıca bilgi verilmektedir.

Theoretical and practical trainings are provided by our trainers in line with the needs of our customers. Project supervisors are provided with detailed information regarding compliance of the products to be used in the projects within the scope of this training with occupational safety, technical specifications, utilization system and standards.

يتم تقديم خدمات التدريب العملية والنظرية من قبل مدربيننا في المشاريع حسب احتياجات العملاء. يتم في نظام البرنامج التعليمي تقديم المعلومات المفصلة الى مسؤولي المشروع بخصوص المستلزمات التي ستستخدم في المشاريع والالتزام بمعايير السلامة في

В соответствии с потребностями наших клиентов, наши преподаватели проводят курсы подготовки в теоретических и практических проектах. В рамках этих курсов подготовки, вместе критериями безопасности труда в отношении используемой в проектах продукции, лицам, несущим ответственность за проект, предоставляется подробная информация о технических характеристиках, применении системы и соответствии стандартам.



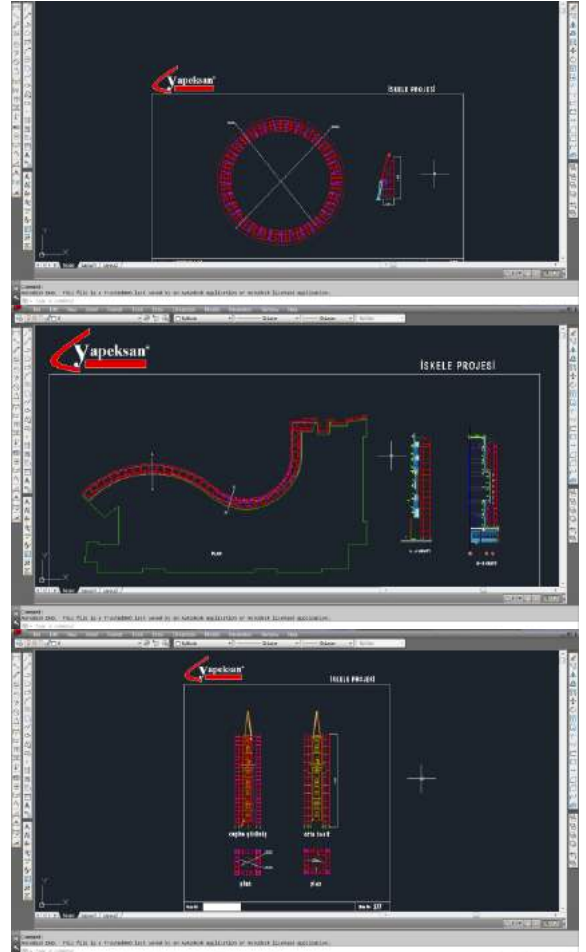


Yapeksan proje birimi, müşteri projelerine göre uygun olan iskele sistemini belirlemekte ve mimari projelerine göre iskele yerleşimini yapmaktadır.

Yapeksan project department identifies scaffolding systems suitable for customer projects and performs scaffolding placement based on architectural projects.

كما يقوم وحدة مشاريع يبيكسان بتحديد نظام السقالة المناسب حسب مشروع العميل و تثبيت السقالة حسب المشاريع المعمارية.

Проектный отдел Yapeksan, в соответствии с проектом клиента определяет самую подходящую систему строительных лесов и размещает строительные леса в соответствии с архитектурным проектом.





Üretimini yaptığımız sistemlerin stoktan satışını yaparak müşterilerine hızlı çözümler sunmaktayız. Ürünler, standart miktarlarda, marka etiketli, paketlenmiş ve güvenli olarak müşterilere sevk edilmektedir.

We offer quick solutions to our customers by making sales of our systems from stocks. Products are shipped in standard quantities with brand label, package in a safe manner.

إننا نقدم الحلول السريعة الى عملائنا الاعزاء من خلال بيع الأنظمة التي نقوم أنتاجها من المخزون. يتم شحن المنتجات بشكل مغلف ومصلق العلامة التجارية وبالكمية المعيارية بشكل آمن الى الزبائن.

Продавая со складов системы, которые мы выпускаем, мы предлагаем клиентам быстрые решения. Продукция отправляется клиентам надёжным способом, в стандартном количестве, с этикеткой торгового бренда, упакованная в пакеты.



Kiralama | Rentals | التآجير | АРЕНДА

Yapeksan, geniş ürün stoku ile müşterilerine hızlı ve esnek çözümler sunmaktadır. Yapeksan, kiralama hizmeti ile uzun süreli projelerde, depolama, bakım, onarım ve yatırım maliyeti gerektirmeden müşterilerine avantajlı çözümler sunmaktadır.

Yapeksan offers quick and flexible solutions to its customers with a wide range of stocks. With its leasing service, Yapeksan offers advantageous solutions to its customers without any need of storage, maintenance, repair and investment costs in long-term projects.



يقدم بيبكسان بمخزون منتجاتها الواسعة الحلول السريعة والمرنة الى عملائها الأعضاء. كما ويقوم بيبكسان بتقديم الحلول المميزة الى عملائها الأعضاء بواسطة خدمة التأخير دون تكاليف تخزين وصيانة وتصليح وأستثمار في المشاريع الطويلة الأجل.

Yapeksan, с обширным запасом готовой продукции, предлагает клиентам быстрые и гибкие решения. Yapeksan, оказывая арендные услуги, для долгосрочных проектов предлагает клиентам выгодные решения, не требующие наличия складов, выполнения обслуживания и вложения средств.



YAPEKSAN YAPI EKİPMANLARI SAN. ve TİC. A.Ş.

Mustafa Kemal Paşa Mah. Eski Edirne Asfaltı No: 20/A
Avcılar - 34320 İstanbul / TÜRKİYE

- +90 212 423 33 78
- +90 212 423 24 70
- info@yapeksan.com.tr
- www.yapeksan.com.tr



TS EN ISO 9001



TS EN 12810-1



TS EN 1004



TS EN 74-3



İSKELE KALIP
SANAYİCİLERİ
DERNEĞİ